



**E220-900TBL-01 Datasheet v1.0**

---



目录

<b>1. Brief introduction</b>	<b>3</b>
<b>2. Quick start</b>	<b>4</b>
2.1. Preparation before test	4
2.2. The communication for Mode 0	4
2.3. Other modes	5

## Disclaimer and copyright notice

The information in this article, including the URL for reference, is subject to change without notice. The document is provided "as is" without warranty of any kind, including any warranty of merchantability, fitness for a particular purpose or non-infringement, and any warranty of any proposal, specification or sample referred to elsewhere. This document does not bear any liability, including any infringement of any patent rights resulting from the use of the information contained in this document. No estoppel or other license, express or implied, is granted herein for the use of intellectual property.

All the test data obtained in this paper are obtained by E-Baite laboratory, and the actual results may be slightly different.

It is hereby declared that all trade names, trade marks and registered trade marks mentioned herein are the property of their respective owners.

The right of final interpretation belongs to Chengdu Yibaite Electronic Technology Co., LTD.

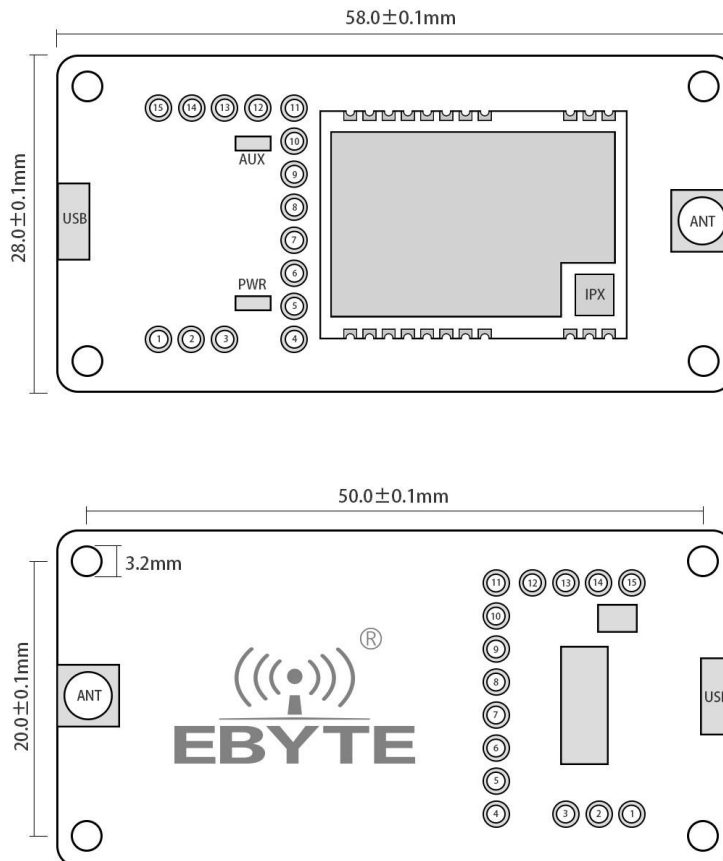
## The attention

The contents of this manual may change due to product version upgrade or other reasons. E-baite Electronic Technology Co., Ltd. reserves the right to modify the contents of this manual without any notice or prompt. This manual is only used as a guide, and Chengdu Yibaite Electronic Technology Co., Ltd. makes every effort to provide accurate information in this manual, but Chengdu Yibaite Electronic Technology Co., Ltd. does not guarantee that the content of this manual is completely free of errors, and all statements, information and Suggestions in this manual do not constitute any express or implied warranty.

# Brief introduction

E220-900TBL-01 is a set of test kit formed by SMD UART module combined with USB to TTL serial board for customer testing and development, which greatly reduces the difficulty of testing and development of customers. This manual describes how to use the test board for more details. Please refer to the E220-900T22S user manual.

## 1.1. Description for size and interface



No.	Def.	Description
1	5V	5V network on the backplane, can be shorted with VCC by jumper for module power input
2	VCC	Module power supply
3	3.3V	3.3V network on the backplane, can be shorted with VCC by jumper for module power input
4	GND	Grounding
5	VCC	Module power supply
6	NC1	----
7	NC2	----
8	NC3	----
9	RXD	Connect to the TXD pin of the module, for test

10	TXD	Connect to the RXD pin of the module, for test
11	AUX	Pls refer to the E22-900T22S user manual
12	M1	For mode selection, 1 for floating and 0 for jumper and GND shorted connected.
13	GND	Grounding, usually work with M1
14	M0	For mode selection, 1 for floating and 0 for jumper and GND shorted connected.
15	GND	Grounding, usually work with M0

## 2. Quick start

### 2.1. Preparation before test

#### 2.1.1. Driver installation

Please visit our website for downloading CH341SER.EXE ([Click here for download](#)), double click for install. This driver supports 32/64 bit Windows 10/8.1/8/7/VISTA/XP, SERVER2016/2012/2008/2003, 2000/ME/98, pass Microsoft digital signature authentication, supports USB to 3-wire and 9-wire serial ports and so on

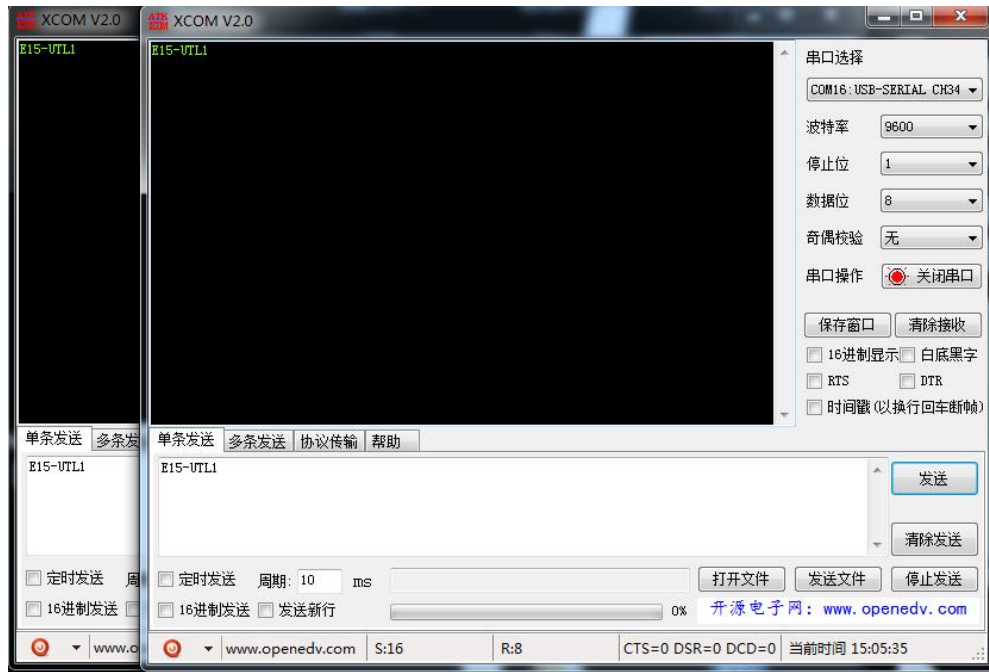
#### 2.1.2. Connection for hardware

Please prepare the Micro USB cable and antenna, connect to the E22-900TBL-01, and open the corresponding serial port.

### 2.2. The communication for Mode 0



As shown in the figure, plug in the jumper (select 5V power supply, mode 0), both E22-900TBL-01 are configured as the same, open the corresponding serial port, you can send and receive data, and you can observe that the AUX light of the backplane flashes.



### 2.3. Other modes



As shown in the figure, plug in the jumper (select 5V power supply, mode 1). For details, please refer to the corresponding serial port module manual.



As shown in the figure, plug in the jumper (select 5V power supply, mode 2). For details, please refer to the corresponding serial port module manual.



As shown in the figure, plug in the jumper (select 5V power supply, mode 3). For details, please refer to the corresponding serial port module manual.

## Revision history

Version	Date	Description	Issued by
1.0	2020-01-09	Initial version	Linson

## About us

Sales hotline: 4000-330-990

Tel: 028-61399028

Support: [support@cdebyte.com](mailto:support@cdebyte.com)

Website: [www.ru-ebyte.com](http://www.ru-ebyte.com)

Address: Innovation Center B333~D347, 4# XI-XIN road, High-tech district (west), Chengdu, Sichuan, China



**Chengdu Ebyte Electronic Technology Co.,Ltd.**